



ST. PAUL

CATHOLIC CHURCH



FOUNDED ON FAITH · CONTINUING OUR JOURNEY

Dear Friends,

15 October 2022

It is with great excitement and joy that I announce the Capital Campaign for our new beautiful church! We have waited years for this moment to arrive. **What was once a dream and a hope is now very close to becoming a reality for our parish community.**

As we prepare to launch this important Capital Campaign, we are reminded of the words of St. Paul:

“For we are God’s co-workers; you are God’s field, God’s building. According to the grace of God given to me, like a wise master builder I laid a foundation, and another is building upon it. But each one must be careful how he builds upon it, for no one can lay a foundation other than the one that is there, namely, Jesus Christ.” 1 Cor. 3:9-11

I thank all of you for your positive support of this very important project. With your help, **we will accomplish this sacred mission entrusted to us for the good of St. Paul Parish** and for the future generations of Catholics yet to come.

May God bless you and may God bless St. Paul Parish.
Fr. Michael Hermes, Pastor



Campaign Prayer

Heavenly Father, thank you for the many blessings you have bestowed on our St. Paul family. Help us to accept this challenge to move forward and embrace the pioneer spirit that founded our parish.

Open our minds and hearts to discern your will as we persevere in this faith journey. We trust your blessings and grace will continue to flow on us all. We make this prayer through Christ Jesus our Lord. Amen.



FOUNDED ON FAITH
CONTINUING OUR JOURNEY

About St. Paul Catholic Church

VISION STATEMENT



St. Paul is a **welcoming diverse community** that **loves and serves God** through our worship, faith formation, sacramental participation, and service to others.

We embrace the generous **pioneer spirit** that founded our parish, helping to make missionary disciples, and witnessing to Christ by our **words and works of mercy**.

The Pioneer Spirit

1860 1868 1876 1959 2015 TODAY

1860: The first Mass for the new St. Paul Parish was celebrated in February 1860 at the home of Olathe resident Terence Cosgrove.

1868: Fr. Alois Mayer celebrated the first Mass in the newly constructed St. Paul's Church near downtown Olathe.

1876: Bishop Fink purchased 4 lots at the southwest corner of Santa Fe & Chestnut for a new church. The first Mass at this location was celebrated on November 1st, 1884.

1959: To support parish growth, the parish moved to 900 S Honeysuckle Drive where it served for 60 years.

2015: Phase 1 of the Capital Campaign was launched. The parish moved to Lone Elm & 115th Ter. in December 2018.

Today: Phase 2 of Capital Campaign



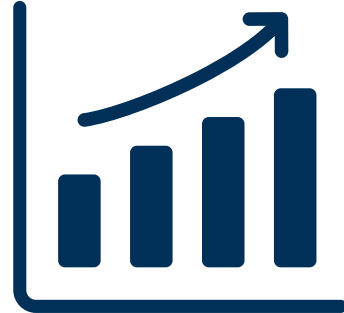
Phase 1 Recap



Delivered on time
and on budget



Paid off in
record time



Parish is growing
at a rapid rate

Our Parish Today



**2ND LARGEST PARISH
IN THE ARCHDIOCESE**

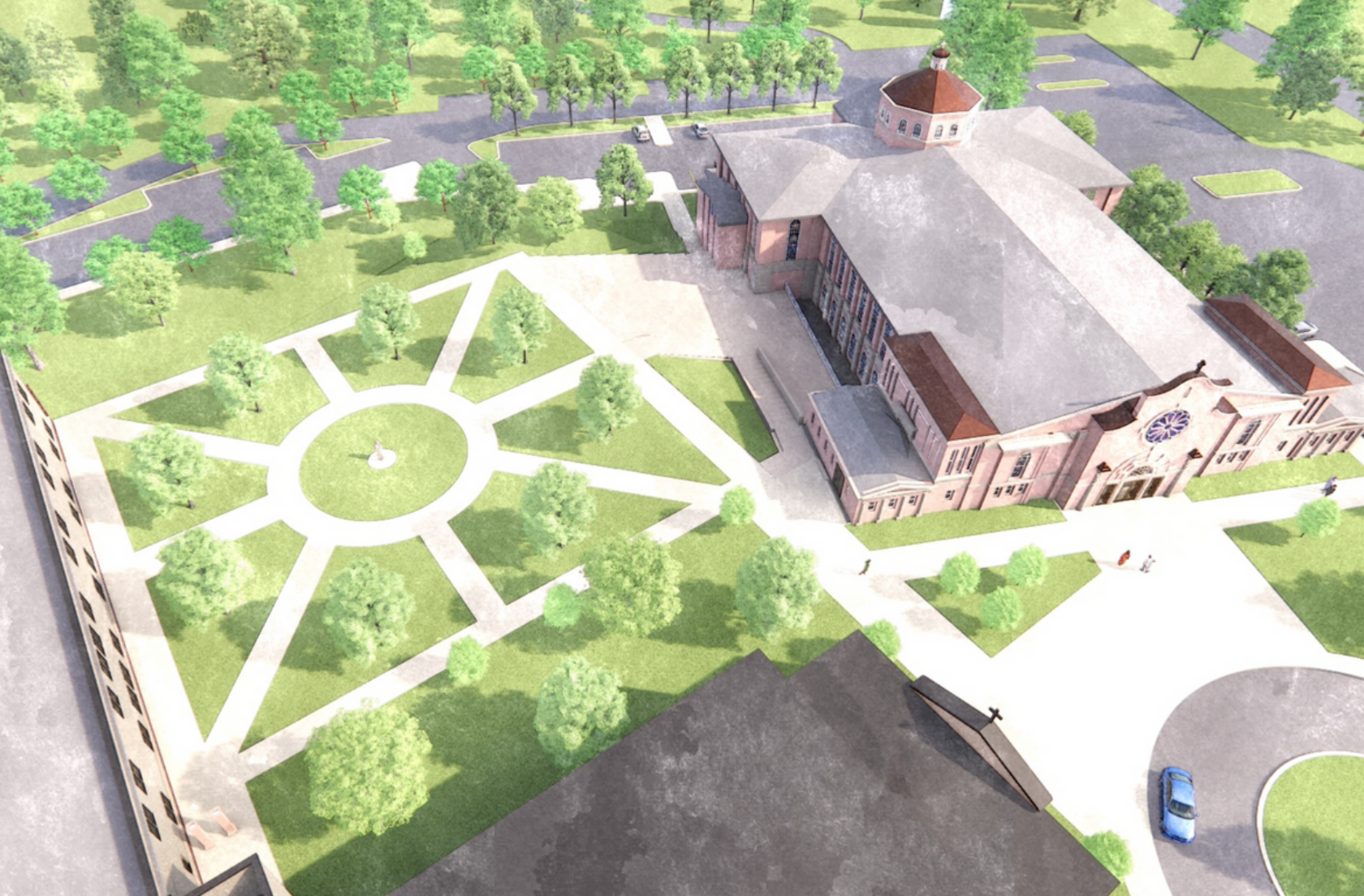
**ACTIVE MINISTRIES
AND CHURCH GROUPS**

**OVERFLOWING
WORSHIP SPACE**

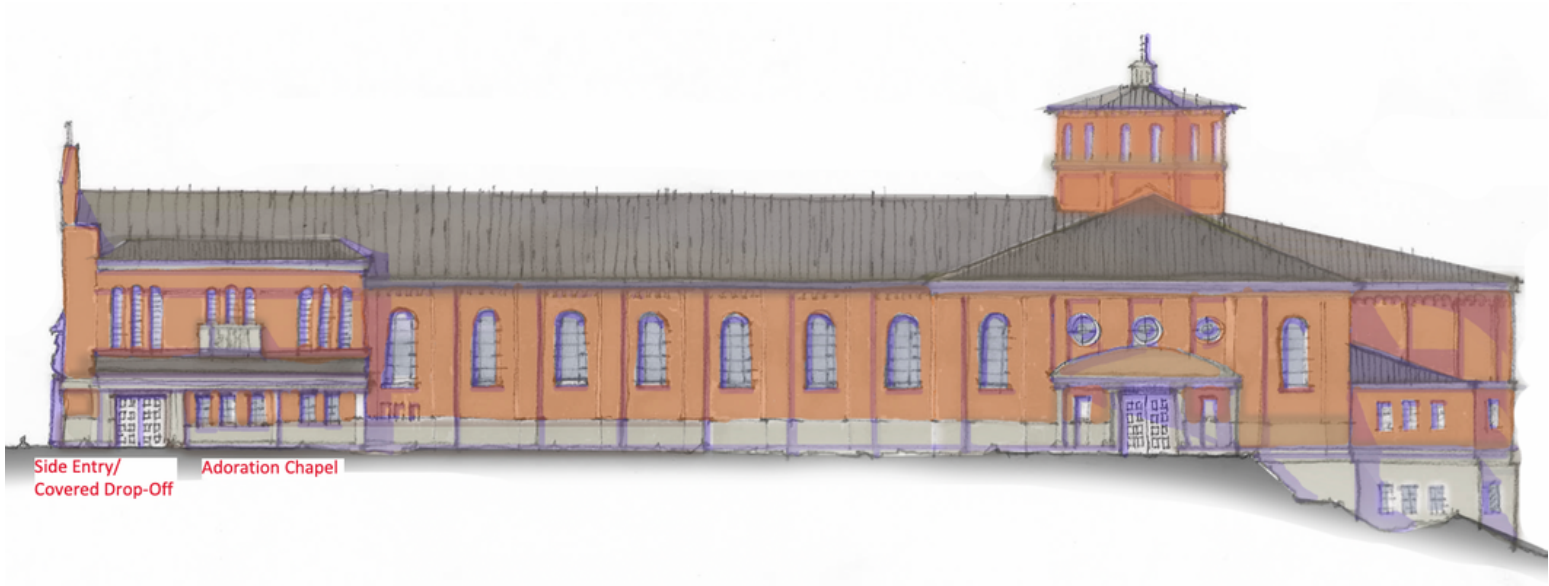
Phase 2: Our New Church

ST. PAUL CATHOLIC CHURCH







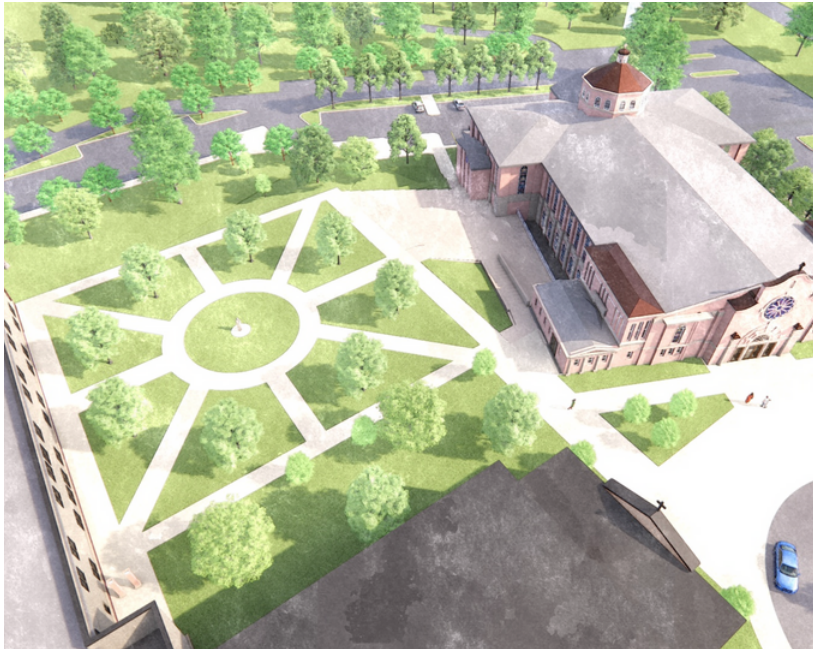


Side Entry/
Covered Drop-Off

Adoration Chapel

SIDE VIEW FROM LONE ELM ST.

Design Features



HEAVEN ON EARTH

- The Catholic Church communicates the truth of God's love in faith through the Word and also sacred architecture
- A Church is meant to help us lift up our minds and hearts to God in prayer

ROMANESQUE CHURCH WITH SPANISH COLONIAL FACADE

- A thoughtful combination of traditional Romanesque and Colonial style
- Designed in the shape of a Cross to remind us of our salvation

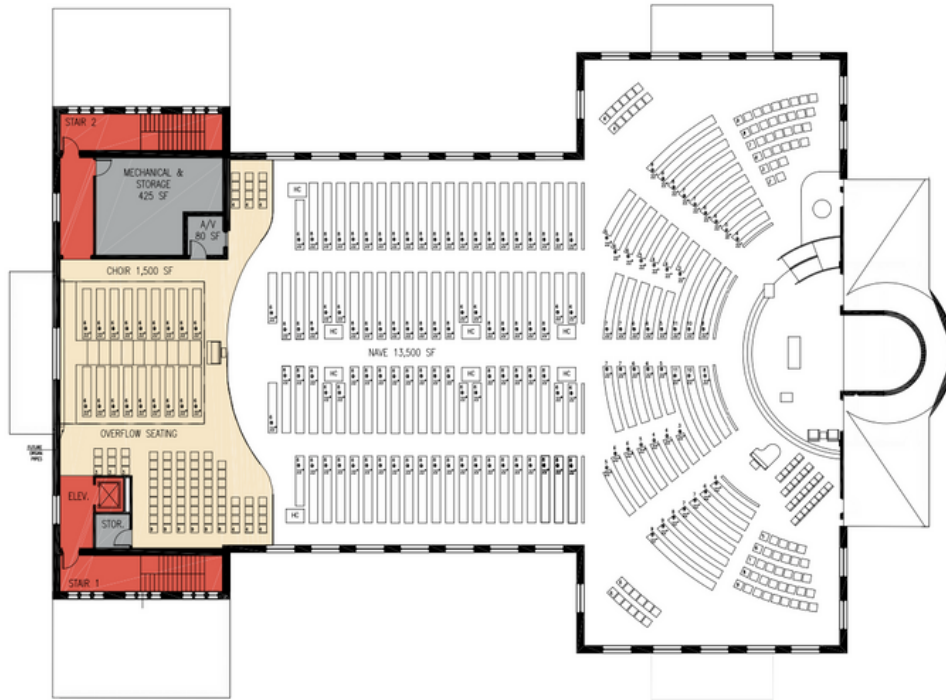
A CHURCH FOR THE GENERATIONS

- Includes a courtyard modeled after the Major Basilica of St. Paul Outside the Walls in Rome





INTERIOR - CHURCH HALL (LOWER LEVEL)



INTERIOR - CHOIR LOFT (UPPER LEVEL)

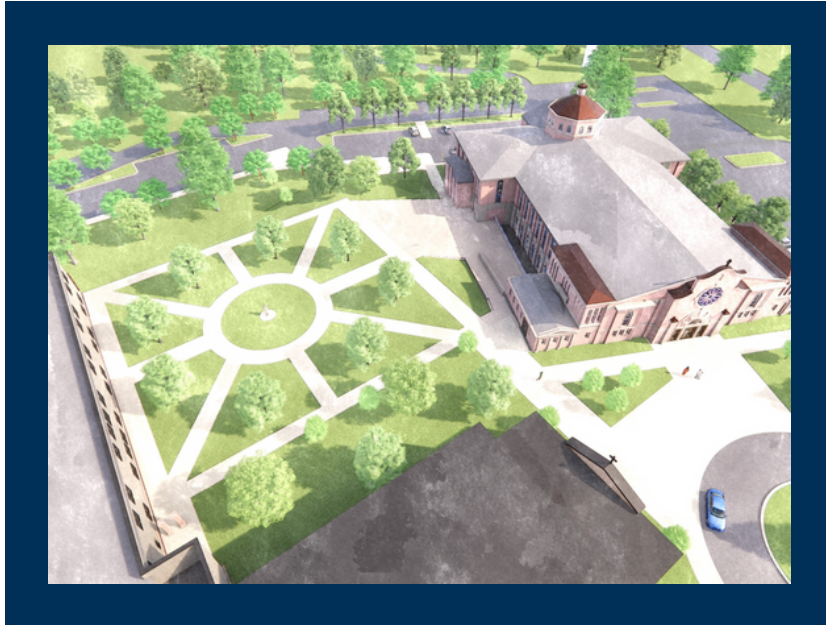
Investment

\$26 Million

TOTAL PROJECTED COST
AS OF MAY 2022

Updated estimates will be provided every six months to help us manage and, perhaps, lower the overall projected cost of Phase 2.

INCLUDES CHURCH,
PARISH HALL, COURTYARD



Timeline

ESTIMATED

2022-2026

CAPITAL
CAMPAIGN

2023

2024

2024-2026

SCHEMATIC
DESIGN AND
CONSTRUCTION
PLANNING

PROJECTED
GROUND BREAKING
AND START OF
CONSTRUCTION

CONSTRUCTION,
FINISHING, AND
OPENING.
FIRST MASS

BUDGET YOUR GIFT OVER 5 YEARS

Giving Schedule

	ST. PAUL'S FORCE	ST. PAUL'S COMPANION	ST. PAUL'S BUILDERS	ST. PAUL'S PIONEERS
Total Gift	\$50,000	\$25,000	\$10,000	\$6,000
Annually	\$10,000	\$5,000	\$2,000	\$1,200
Monthly	\$835	\$415	\$165	\$100
Weekly	\$200	\$100	\$40	\$25

The pledges are not legally binding. If your situation changes, such as moving out of town, we can reduce the pledge to paid to date. However, the pledges are morally binding as we will be getting a construction loan based on the pledged amount. Please contact giving@spcatholic.org with any question regarding the status of your pledge. Thank you!

How to Give



FILL OUT & RETURN PLEDGE CARD

Return in the Sunday collection basket or to the Parish Office at 21650 W 115th Ter, Olathe KS 66061



START A NEW CAMPAIGN PLEDGE ELECTRONICALLY

spcatholic.org/donate



DISCUSS WITH BUSINESS MANAGER AMY MORITZ

Email: giving@spcatholic.org

Phone: 913.764.0323 x107



JIM & JANICE STEINLAGE

We are excited to be part of St. Paul's new church campaign. Participating with our time, talent and treasure in numerous different churches building campaigns in the past has blessed us greatly. We could never outgive God's generosity back to us.



BRUCE & ROBIN DROGE

We give to the capital campaign because we know and understand that a strong, vibrant parish is crucial to building a better tomorrow for our community.

We are amazed at how many new families are joining St. Paul, and anxiously await the new Church to better serve our growing parish family.



PHIL & TERRY PUNSWICK

We are excited to be involved in the next phase of our parish. We believe God is calling us to give back in thanksgiving for the abundance He has provided.

Please join us in supporting Phase 2 as we strive to meet our current needs and future generations.

**Why
We Give**
TESTIMONIALS

PASTOR

Fr. Michael Hermes

ASSOCIATE PASTOR

Fr. Agustín Martínez

BUILDING COMMITTEE

Arturo Rodríguez
Christopher Parazin
Dennis Wilbert
Jenny Yankovich
Joe Sharbaugh
Karen Crnkovich
Melissa Lyons

FINANCE COUNCIL

Dave Humphrey
Jenny Yankovich
Pat May
Roger Herting
Scott Anderson
Seth Wiedel
Joe Sharbaugh



**FOUNDED ON FAITH
CONTINUING OUR JOURNEY**

“For we are God’s co-workers; you are God’s field,
God’s building. According to the grace of God given to
me, like a wise master builder I laid a foundation, and
another is building upon it.

But each one must be careful how he builds upon it, for
no one can lay a foundation other than the one that is
there, namely, Jesus Christ.”

1 Corinthians 3:9-11



ST. PAUL CATHOLIC CHURCH
21650 W 115th Ter · Olathe, KS 66061
913.764.0323 · spcatholic.org